



City of Alexandria

Eugene Simpson Stadium Park Renovation

Construction Kickoff Meeting

June 2, 2025



Agenda



1. Project Team Introductions
2. Park Renovation Planning
3. Park Renovation Goals
4. Anticipated Construction Schedule
5. Temporary Construction Impacts
6. Questions & Answers



Project Team Introductions

Project Sponsor: Recreation, Parks & Cultural Activities (RPCA)

- Responsible for:
 - Planning park improvements;
 - Securing project funding;
 - Programming, operation and maintenance of the park

Point of Contact

Beth Znidersic (RPCA)
(703) 746.5492

Bethany.Znidersic@alexandriava.gov

Project Manager: Project Implementation (DPI)

- Responsible for:
 - Technical design of the park per the approved plan
 - **Management of the contractor** & delivery of the park improvements within the construction schedule and budget

Primary Point of Contact

Mitch Dillon (DPI)
(703) 746.4028

Mitch.Dillon@alexandriava.gov

Construction Contractor: Nichols Contracting (NCI)

- Responsible for:
 - Physical construction of the park in a safe and expeditious manner;
 - Adhering to all City, State and Federal Codes, permits and requirements

Point of Contact

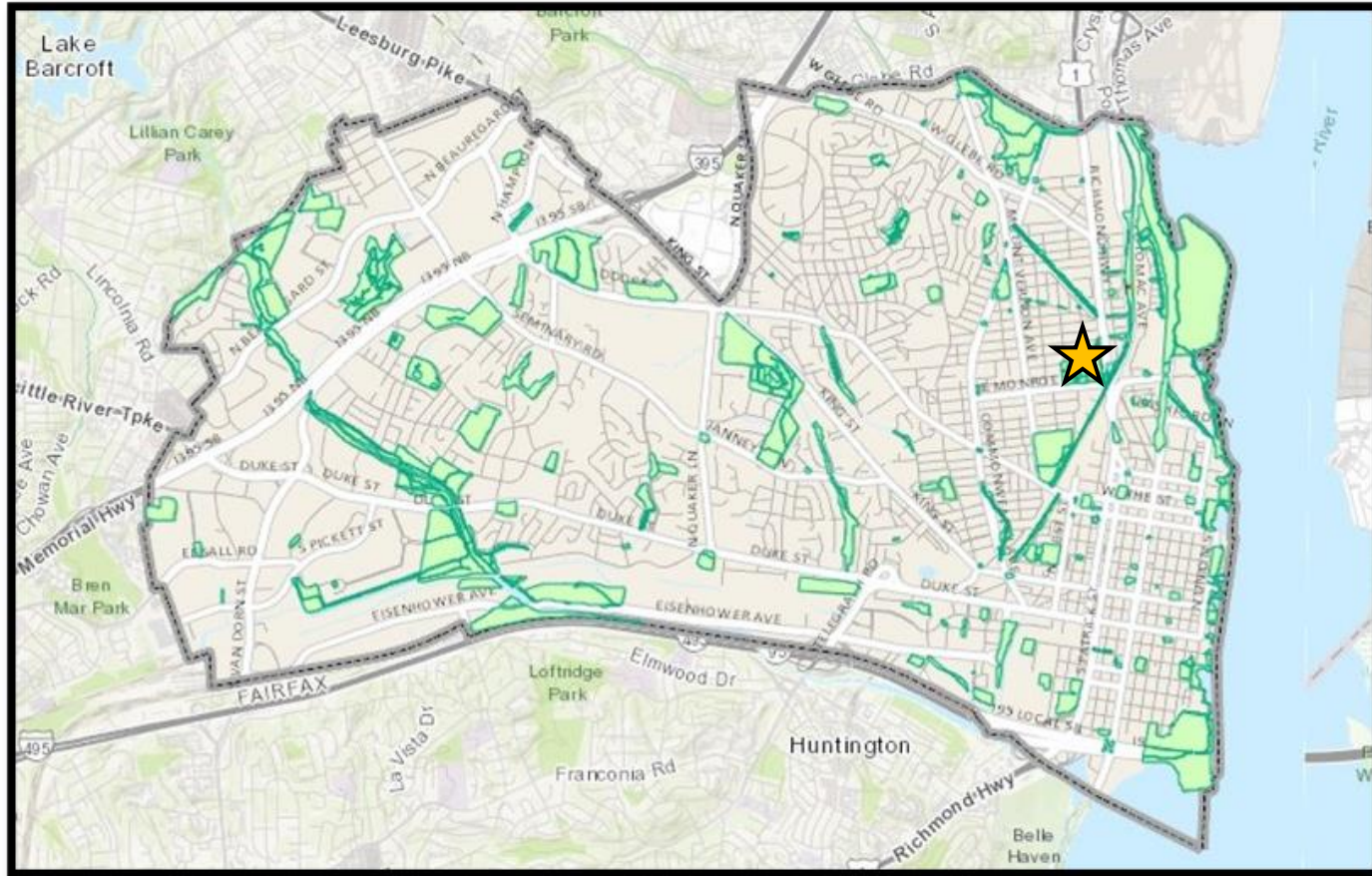
Please contact the City

Emergency contact information will be posted at the park entrance

Introductions



Project Planning



**Eugene Simpson Park:
426 E. Monroe Avenue**

- Two natural turf diamond sports fields
- Two natural turf rectangular sports fields
- Two multi-use courts
- One basketball court
- One playground
- One dog park
- Multiple open play areas
- Gardens
- One bath house
- Paths, parking, and other supporting elements

Project Location



Project Planning

The basis of design for the Simpson Park Renovation Project is the 2014 Citywide Park Improvement Plan for the park.

- Plan development began in 2012
- Plan amendment in 2021
- Multiple public outreach efforts including
 - Public workshops
 - Online surveys,
 - Community Meetings
- Over 240 public survey responses and meeting attendees
- Park Design was approved in June 2023

2014 Park Imp. Plan

What needs improvement in Simpson Park?



The highest priority is shown as the largest circle; the lowest priority is the smallest circle. Priorities are based on the number of responses to needed improvements and then weighted by how participants prioritized their answers



Plan Implementation To Date

	Objective
2/3	Improve playground – Completed 2019
4	Create open use areas – Completed 2019
4	Create open use areas – Completed 2019
16	Improve the Dog Park – Completed 2024
17	Add onsite maintenance building – Completed 2018



2014 Park Plan

Open Use Areas



Athletic Fields



Entrance Plaza

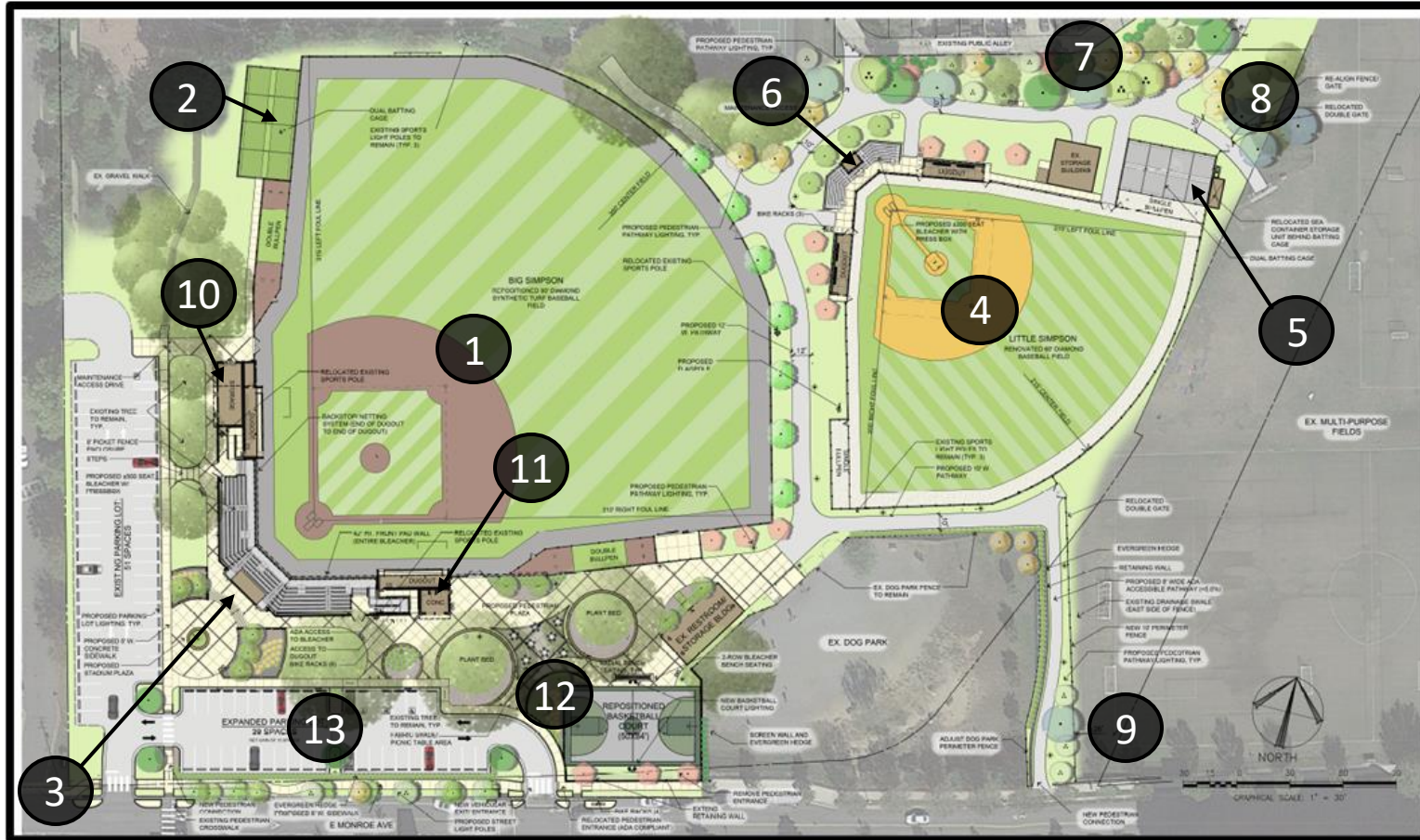


Dog Park





Park Renovation & Goals

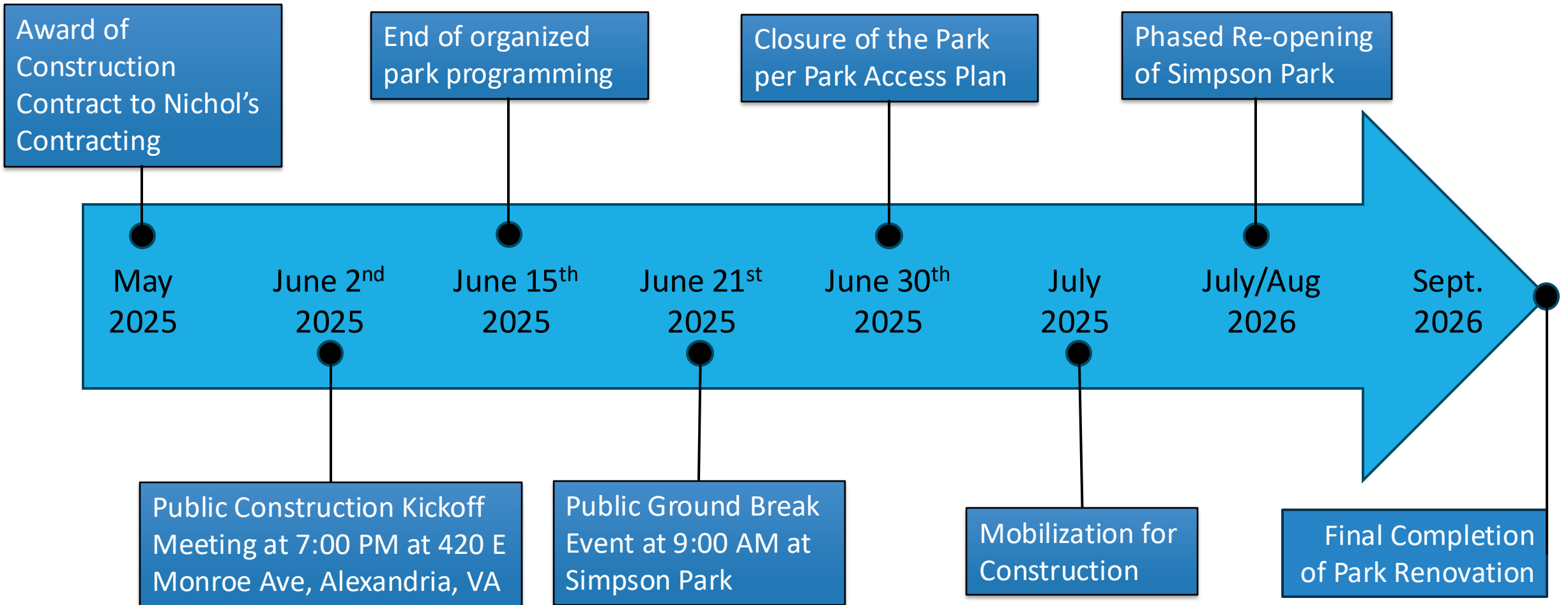


	Objective
1	Improve Big Simpson with synthetic turf
2	Add batting cages at Big Simpson
3	Install new bleachers & press box
4	Improve Little Simpson's natural turf
5	Add Batting cages at Little Simpson
6	Install new bleachers & press box
7	Create native vegetative buffer
8	Expand hardscape trail to E. Bellefonte
9	Create ADA access along Dog Park
10	Provide new equipment storage
11	Provide concessions booth
12	Create a new shaded picnic area
13	Expand the parking lot

Rendering



Construction Schedule



Schedule



Temporary Impacts: Noise



Construction operations will generally be limited to Monday through Friday from 7:00 AM to 6:00 PM. If weekend work occurs, it will be limited to Saturday 9:00 AM to 6:00 PM.

Construction operations will comply with all local, state and federal codes, permits and regulations.

Primary Point of Contact

Mitch Dillon (DPI)

(703) 746.4028

Mitch.Dillon@alexandriava.gov

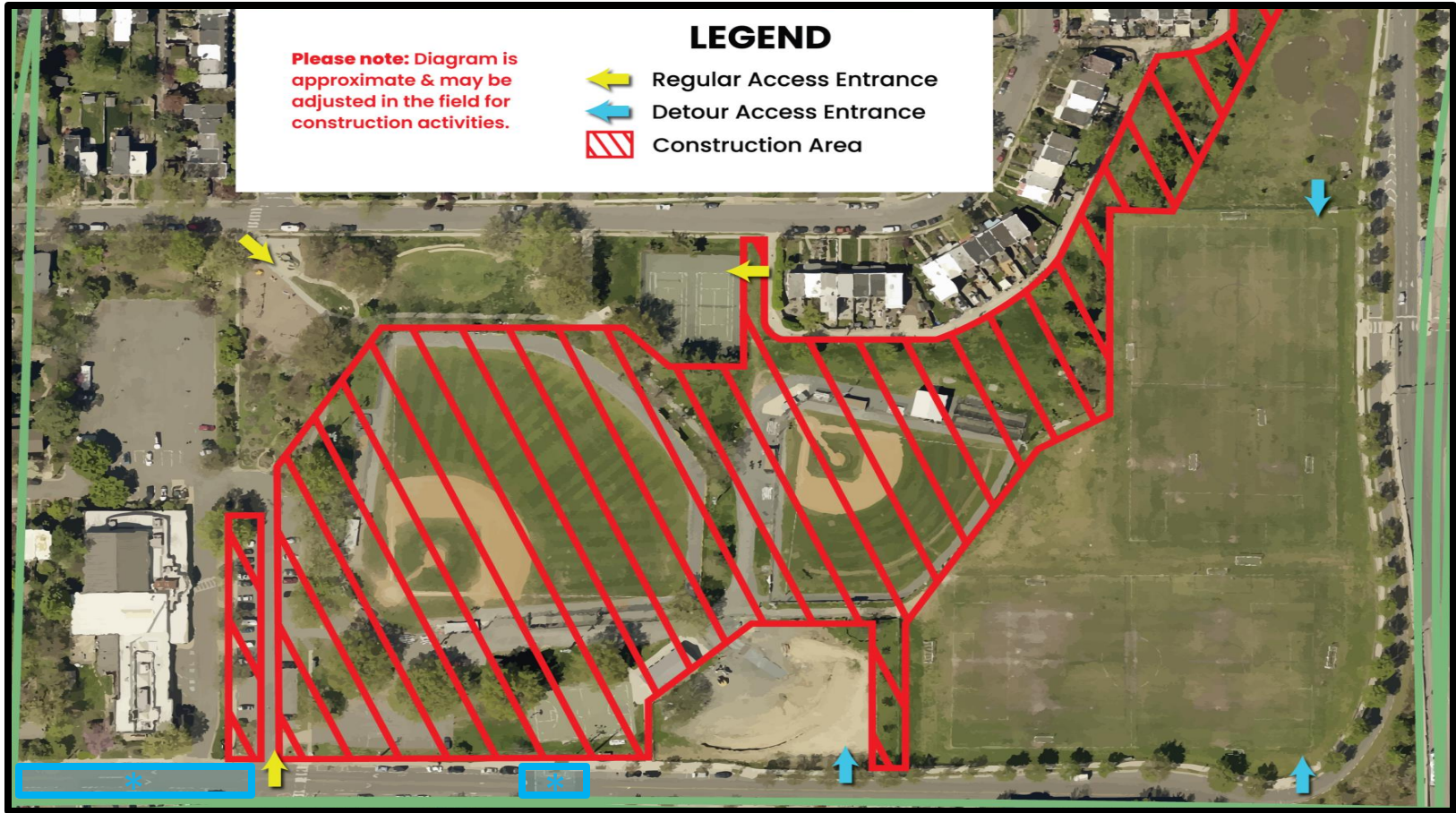
Code Administration

(703) 746.4200

Construction Noise



Temporary Impacts: Access



* Temporary lane shifts & sidewalk detours on E. Monroe Avenue

PARK CLOSURES & ACCESS PLAN	
Attraction	Status
Big Simpson	Closed
Little Simpson	Closed
Basketball Court	Closed
Parking Lots	Closed
Kettle Park	Partially Closed
Bathrooms	Closed
Dog Park	Open Temporary Access from East Monroe Ave.
Rectangular Fields	Open Temporary Access from North & South Gates
Playground	Open
Multipurpose Courts	Open



Temporary Impacts: Tree Removals

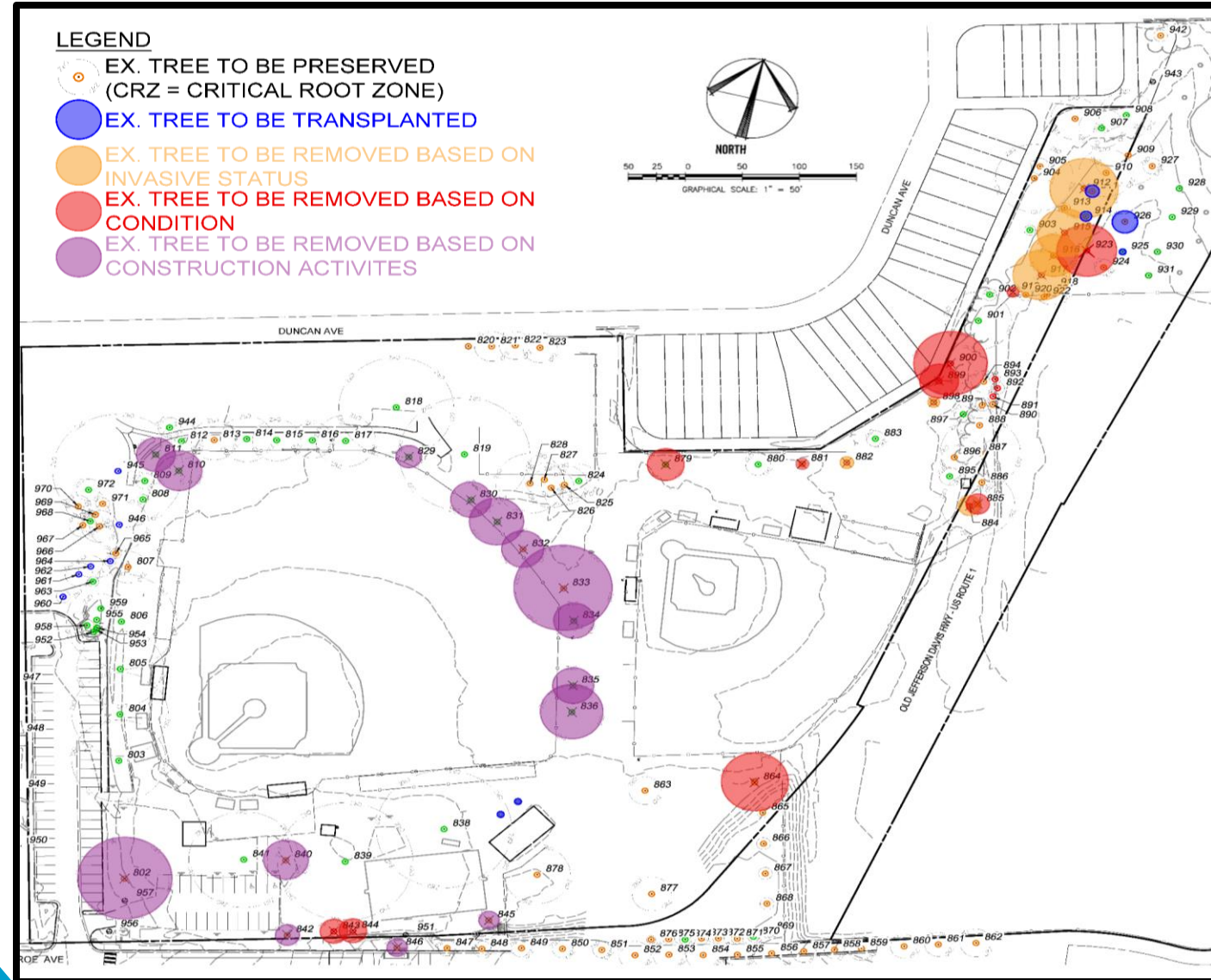
Limited tree removals will be required to support the park improvements.

Adds about 550 Native to Virginia trees and shrubs to the park

Roughly doubles onsite canopy within the construction limits and increases bio-diversity

Retain and protect large onsite trees near park plaza with creative design to limit impacts and utilize protective matting

Tree Removals





Temporary Impacts: Programming



Organized programming of Simpson Park within the construction zone will be temporarily paused starting June 15, 2025.

Consult your sports organization for more information

Programming at Simpson Park within the construction zone is planned to resume in Fall of 2026

Programming



Questions & Answers

Point of Contact

Beth Znidersic (RPCA)

(703) 746.5492

Bethany.Znidersic@alexandriava.gov

Primary Point of Contact

Mitch Dillon (DPI)

(703) 746.4028

Mitch.Dillon@alexandriava.gov

